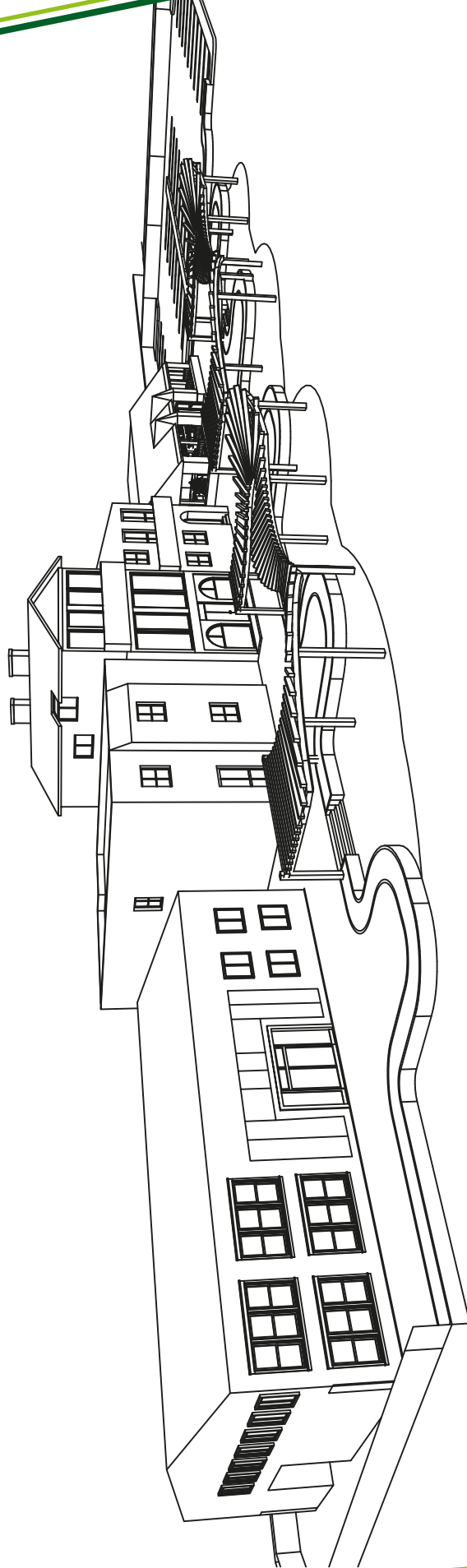
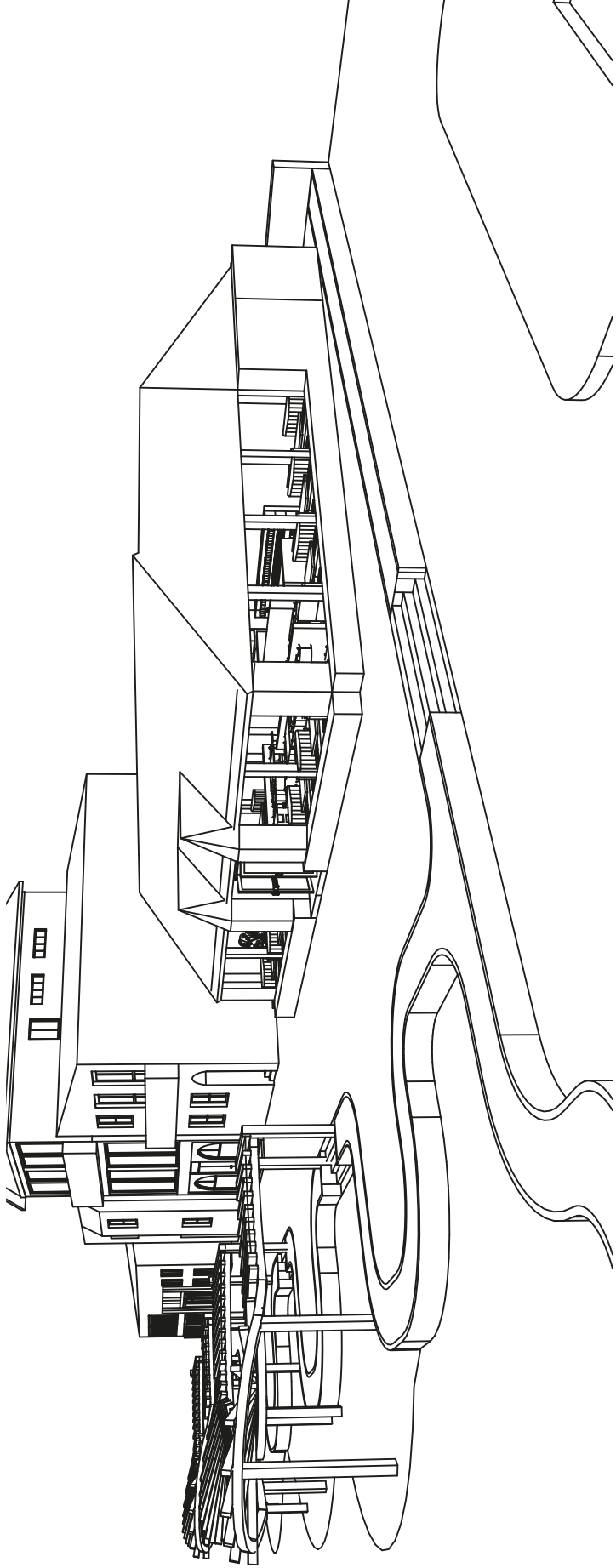


GİRİŞ VE VETERİNERLİK BAKIM ALANI PERSPEKTİF

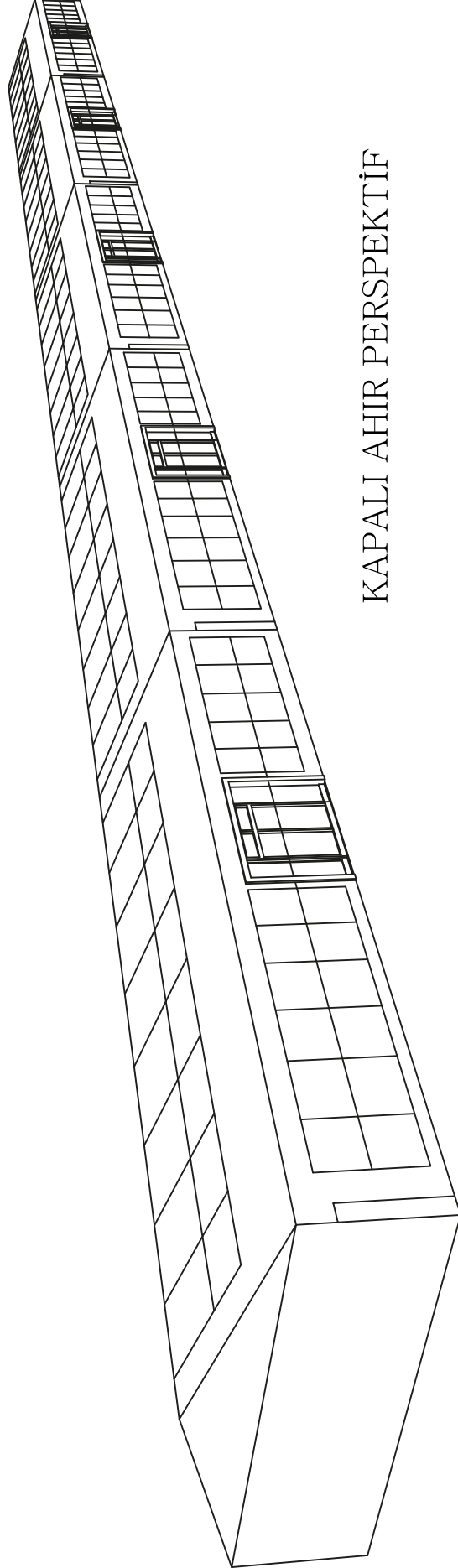


İDARİ BİNA VE KAFETERYA ALANI PERSPEKTİF

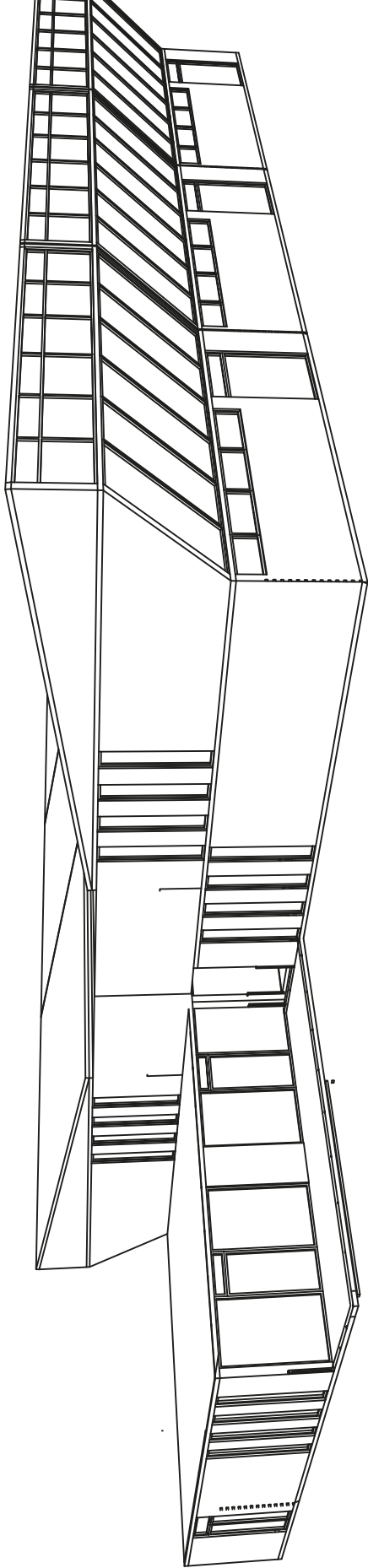




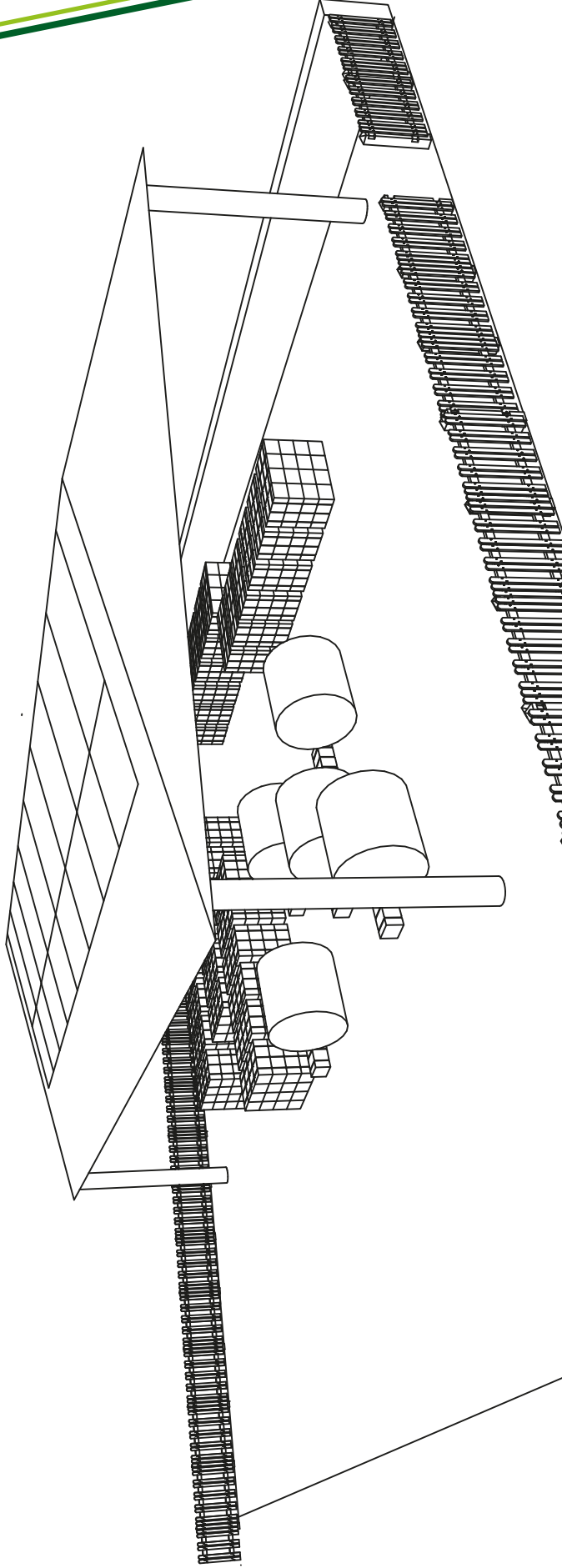
## İDARİ BİNA VE KAFETERYA ALANI PERSPEKTİF



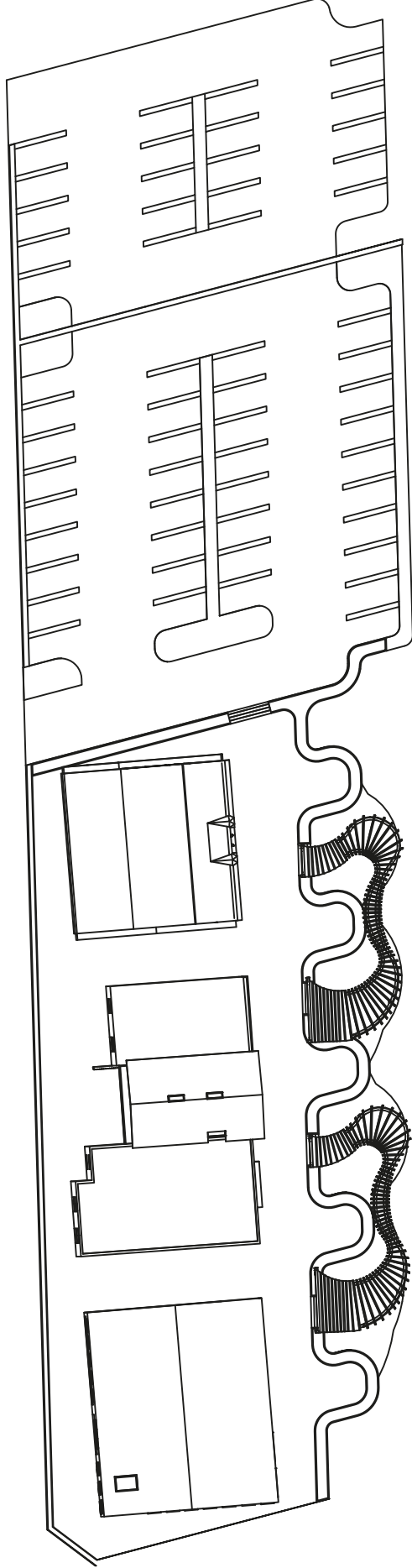
KAPALI AHIR PERSPEKTİF



## MÜZAYEDE ALANI PERSPEKTİF

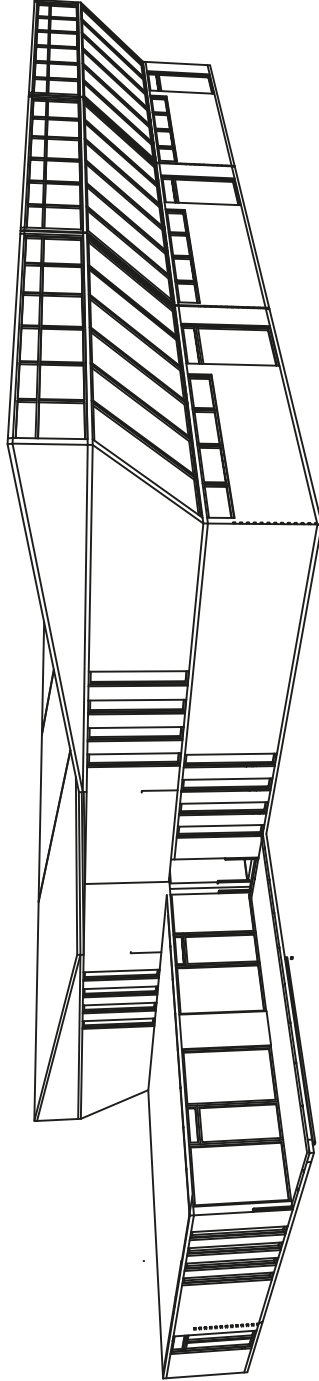
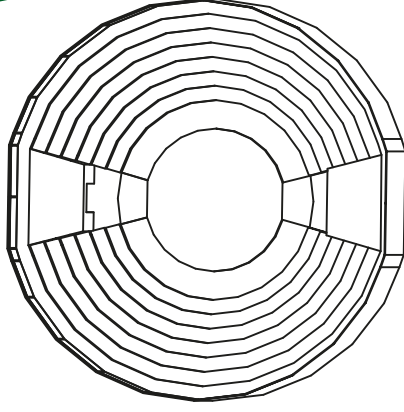


## YARI AÇIK YEM DEPOLARI PERSPEKTİF

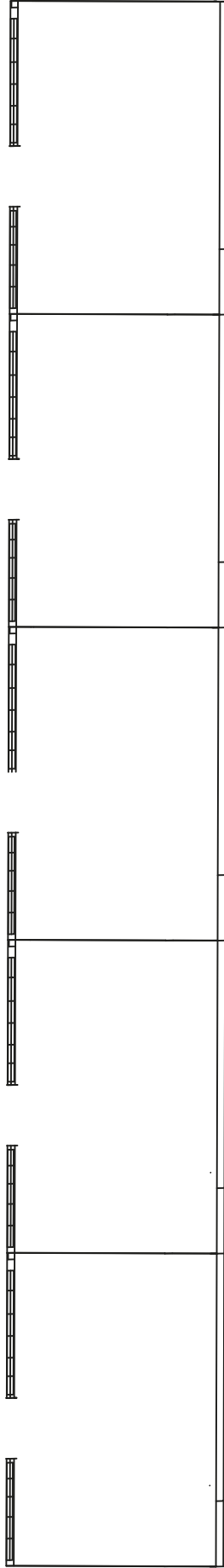


İDARİ BİNA VE KAFETERYA , OTOPARK PLANI

ALANI 3500 M2

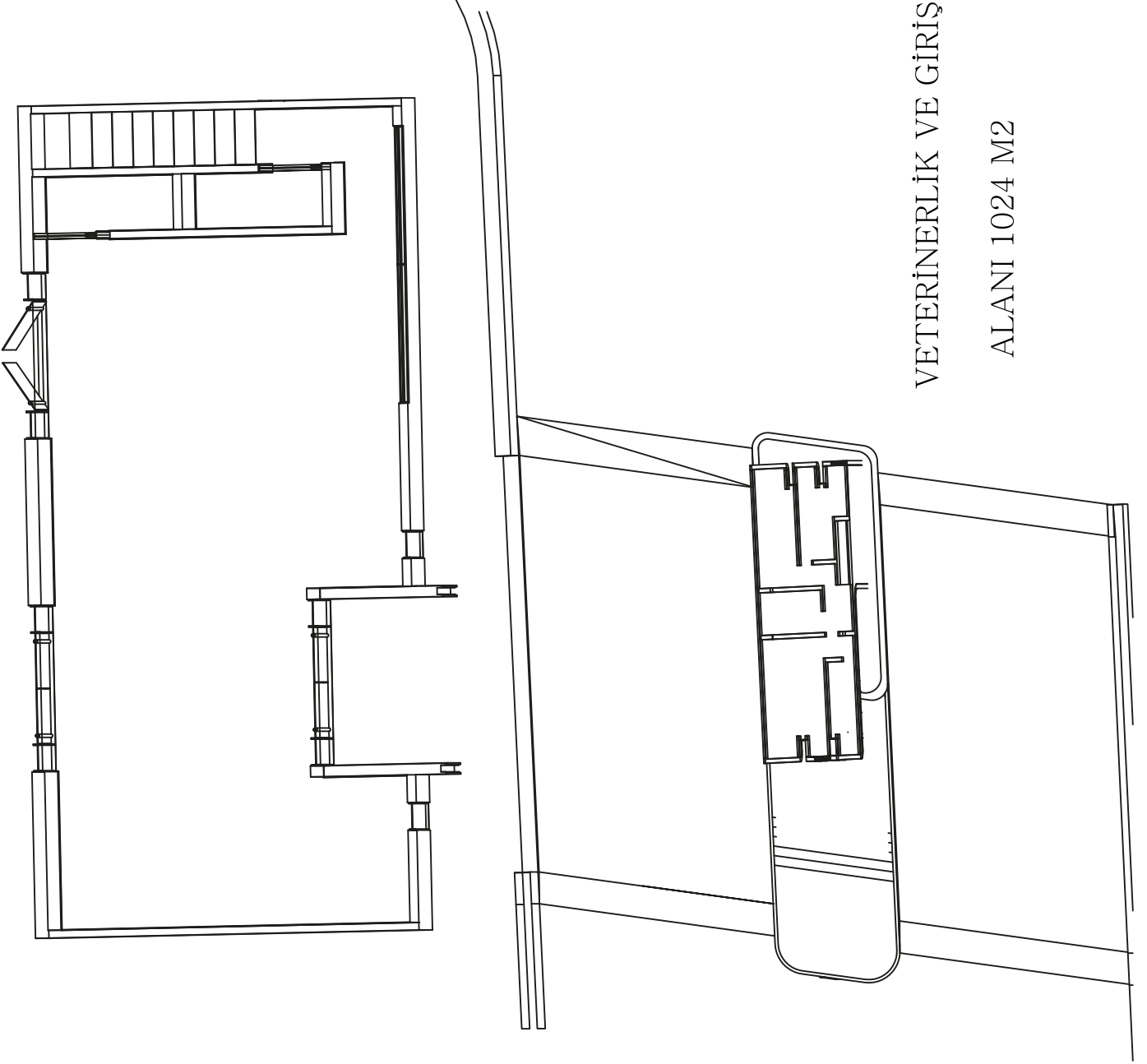


İDARİ BİNA VE MÜZAYEDE PLANI  
ALANI 3850 M2



KAPALI AHIR PLANI

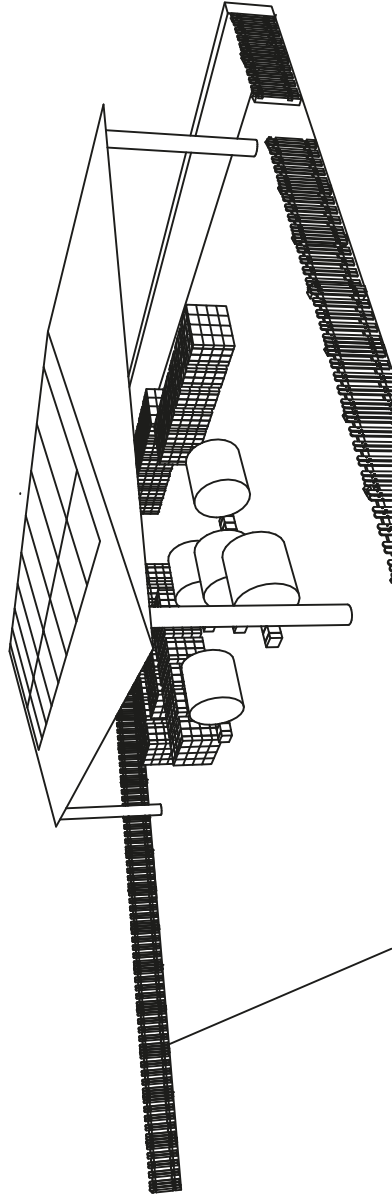
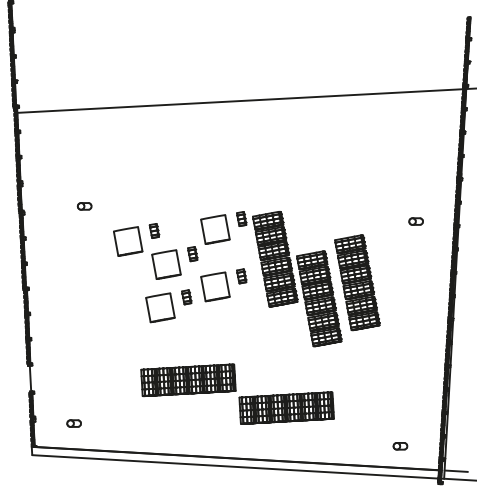
ALAN 1600 M2



VETERİNERLİK VE GİRİŞ PLANI

ALANI 1024 M2





YARI AÇIK YEM DEPOLARI  
ALANI 1000 M2



Van Ticaret Borsası

## KAYNAKÇA

---

T.C. Gıda Tarım ve Hayvancılık Bakanlığı

Van Ticaret Borsası Genel Sekreterliği Hayvancılık Çalışma Grubu

Doğu Anadolu Tarımsal Araştırma Enstitüsü Müdürlüğü

Et ve Balık Kurumu

Kırklareli Ticaret Borsası Invest in Kırklareli Canlı Hayvan Borsası Raporu

Türkiye Geneli Ticaret Borsaları ve Sanayi Ticaret Odaları Verileri

TOBB Veri Tabanı

Tarım ve Hayvancılık Web Siteleri

Ekonomist ve Akademisyenler

Van Ticaret Borsası Basın ve Halkla İlişkiler Birimi